

Monte Carlo Yachts 70



In the following pages You'll get in touch with a set of objective data which describe the characteristics and added values that MCY 70 offers compared to the Azimut 70.

- *Introduction: MCY 70.....Page 3 to 9*
- *Manufacturing Process - Added Values.....Page 10*
- *MCY 70- Added Values.....Page 11*
- *The results: Top-of-the-category standardsPage 12-13*
- *MCY 70 vs Azimut 70 : Main features.....Page 14*
- *MCY 70: Value Added.....Page 15 to 27*
- *MCY 70 vs Azimut 70 : Electronic Equipment.....Page 30*
- *MCY 70 vs Azimut 70 : Engine Room and Crew Cabin Main EquipmentPage 31*
- *MCY 70 vs Azimut 70 : Standard Exterior Style and EquipmentPage 32 -33*
- *MCY 70 vs Azimut 70 : Interior Style and EquipmentPage 34*
- *Conclusions.....Page 35*



First of all, we preferred to let speak the MCY 70 for itself.



Then you'll discover some of the Monte Carlo Yachts innovations in terms of manufacturing process and technical solutions that made such a result possible ...

In terms of external styling, the MCY 70 really stands out. The brief was for something timeless, a future classic. The MCY 70 lines are just that, as distinctive as they are sophisticated.



Elegance and functionality blend together, just like the design and technical solutions.



The foredeck is truly class leading, and portuguese bridges such as this are normally reserved for trawlers or explorer-style yachts. Both those features contribute to a unique character.



The external areas are among the 70's strongest suits – a very safe and practical design, and a genuine innovation on a yacht of this size and type. ... it's like having your own private, high-tech Bedouin encampment.



The aft deck and all the main saloon are on the same level, an unusual feature at this end of the market, and the aft-deck doors open up the whole space. It delivers a real loft feel.



Continuity between the internal and external areas is ensured by the sliding door without fixed flaps, linking the cockpit and the lounge area of the saloon.



To enhance this perception of a single unit created between the external cockpit and the living area the galley is located closer to the bow, near the wheelhouse.



*The master has plenty of stowage
and a tactile, luxurious design...*

*Elegance is fused with functionality,
beauty with utility.*



The wood used is of the highest quality and free from artificial treatment as can be seen in the distressed teak for the flooring, the distressed oak and grey sycamore for the furnishings.



...a few touches of lacquer and fine fabrics from Armani Casa and Rubelli.

For the first time in the yacht sector, Monte Carlo Yachts presents an innovative Manufacturing Process able to revolutionize the world of yachting and the quality of the final product.

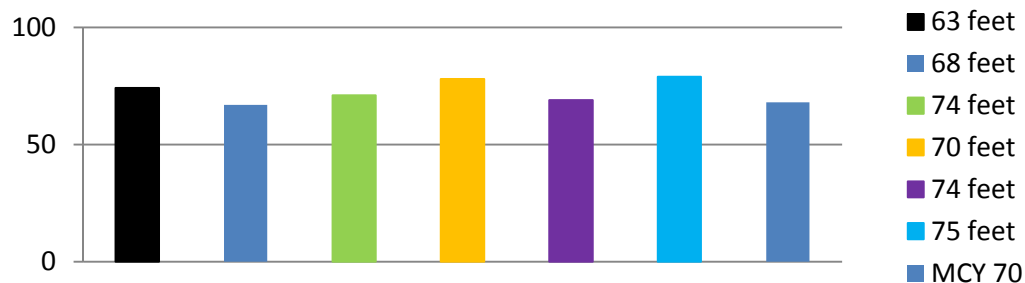
Manufacturing Process - Added Values
Innovative solutions...
- Modular construction process inspired by the Lean Manufacturing concepts
- Extensive technical planning and design
- Entire structure of the interior rooms conceived in modular form so it could be readied outside the hull
- Systems and technologies aimed at lowering the environmental impact of the production activities
- Fibreglass components made by infusion or through closed-mould technologies
...bring to:
- Increased capacity of the works at equal energy consumption
- Care for the smallest design and decor details and all the technical aspects relating to the onboard systems
- Maximum accessibility to interior structure during the preparation of the onboard systems
- High level of assembly quality that results in top level of reliability
- Assembly tolerances limited to around a millimetre
- Soft mounting of the interior rooms to the boat's structure
- Drastic reduction in the levels of emissions in the air and in the work environment

The hull of the MCY 70 presents itself an extraordinary list of innovations that make it possible to attain quality, comfort and technical reliability standards of absolute excellence.

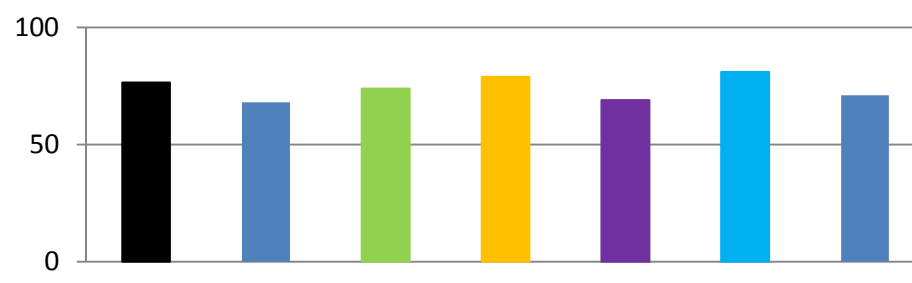
MCY70 - Added Values
Innovative solutions...
- Extensive use of Kevlar and carbon fibre in the highest-impact areas
- Self-supporting plating made in sandwich
- Longitudinal reinforcements
- Bow crash box
- Light core materials
- Optimization of underbody shapes
- Adoption of a system of interceptors with an automatic trim system
- Use of LED lighting in all the yacht's interior and exterior areas
...bring to:
- NVH Reduction: highest reduction of Noise, Vibration and Harshness
- Containment of the boat's weight
- Less fuel consumption and environmental impact
- More efficiency in propulsion, hydrodynamic resistance and trim correction
- Reduced drag
- Increased safety in case of impact
- Onboard energy savings of up to 90% through LED lighting
- Top-of-the-category safety standards certified by RINA

*NVH Reduction: highest reduction of Noise, Vibration and Harshness
The results: top-of-the-category standards.*

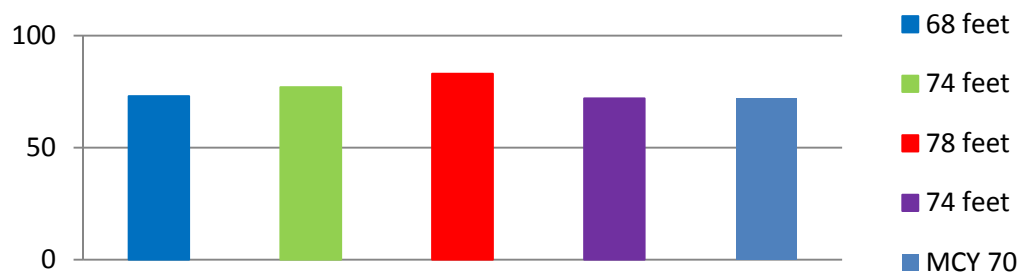
Cruising speed - Helm (dB) *



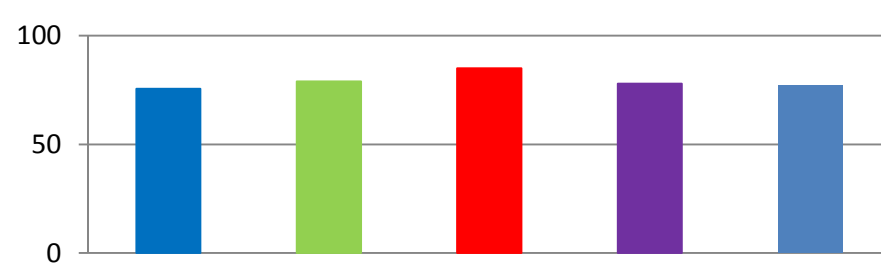
Maximum speed - Helm (dB) *



Cruising speed - Owner (dB) *



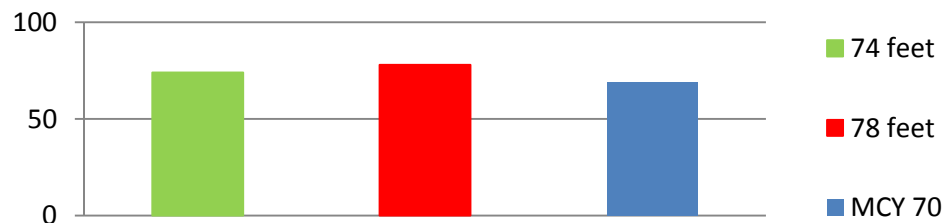
Maximum speed - Owner (dB) *



MCY 70 has demonstrated very high quality standards and comfort compared with tests on yachts up to 78 feet made by the most reliable and well-known international magazines in the field.

* Note: every attempt has been made to give accurate information, but performance and figures are estimates given as a guide only. Sea and wind state, engines conditions, boat speed, engine room ventilation speed, generator conditions, air conditioning speed, background noise levels, type of finishing, doors open or closed and measurements position can all affect the results. For these and other reasons Monte Carlo Yachts can give no performance or other guarantees, and neither such guarantees nor anything contained herein constitutes an offer of contract or any representation or agreement, or may otherwise be relied upon.

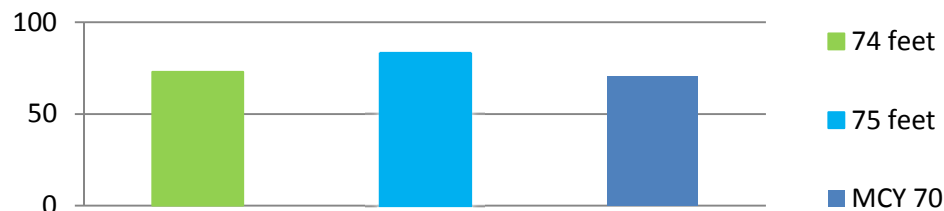
Cruising speed - Saloon (dB) *



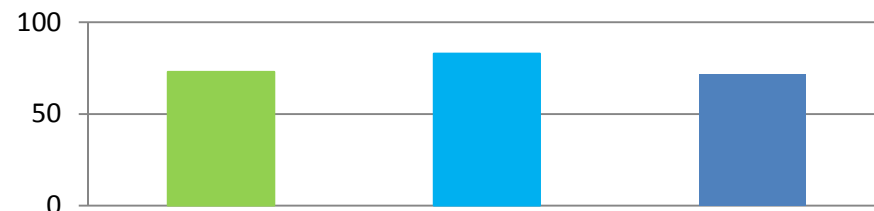
Maximum speed - Saloon (dB) *



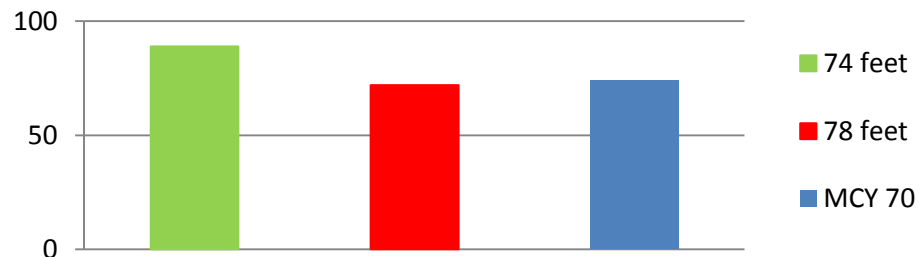
Cruising speed - Vip (dB) *



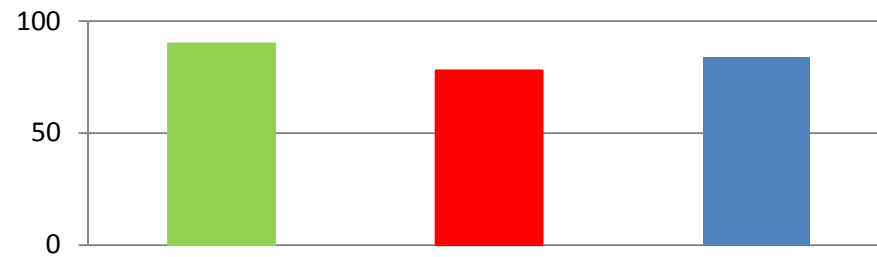
Maximum speed - Vip (dB) *



Cruising speed - Cockpit (dB) *



Maximum speed - Cockpit (dB) *



** Note: every attempt has been made to give accurate information, but performance and figures are estimates given as a guide only. Sea and wind state, engines conditions, boat speed, engine room ventilation speed, generator conditions, air conditioning speed, background noise levels, type of finishing, doors open or closed and measurements position can all affect the results. For these and other reasons Monte Carlo Yachts can give no performance or other guarantees, and neither such guarantees nor anything contained herein constitutes an offer of contract or any representation or agreement, or may otherwise be relied upon.*

MCY 70 vs Azimut 70: main features

MODEL	MAIN FEATURES						
	LOA	Beam	Draught	Approx. Displ. (Full Load)	Engines	Speed (max)*	Speed (cruise)*
	Meters	Meters	Meters	Tons	Type (Hp)	Kn	Kn
MCY 70	21.30	5.42	1.65	47	2 x V8 MAN (1200 Hp) (V-Drive) 2 x V8 MAN (1200 Hp) (POD)	31	26
			1.80	48		33	26
Azimut 70	21.62	5.56	1.63	45.2	2 x V12 MAN (1360 Hp)	33	27



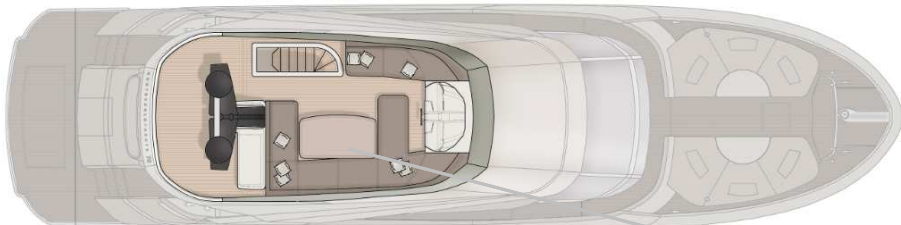
** Note: Every attempt has been made to give accurate information, but performance are estimates given as a guide only. Dirt or growth on the hull, tuning of the engines, size, make of engines fitted, damage to propellers, the temperature of the air and water, the weight of fuel, water, stores, number of people, propeller pitch, quality of fuel and other matters, can all affect a boat's performance and range. For these and other reasons Monte Carlo Yachts can give no performance, range or other guarantees, and neither such guarantees nor anything contained herein constitutes an offer of contract or any representation or agreement, or may otherwise be relied upon. Sunseeker performance come from official brochure.*



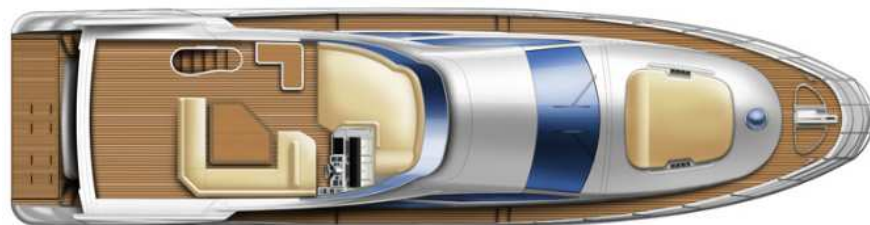
MONTECARLOYACHTS

MCY 70: Value Added

Fly Bridge



MCY 70: Carbon T-Top (opt.)

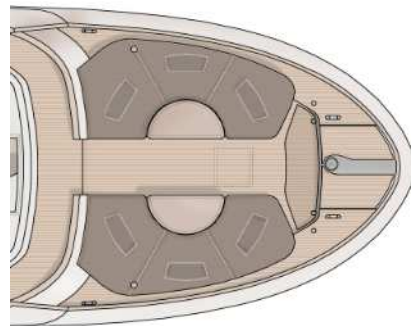


Azimut 70: no carbon T-Top available

Bow Lounge Area



MCY 70: Bow Lounge Area



Azimut 70: One conventional layout

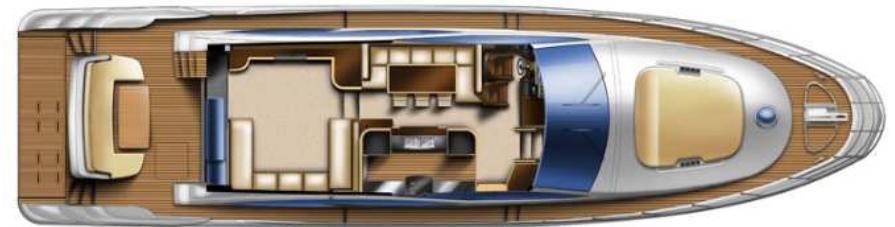
Do not stop to the external layout. Touch also the interior difference ...

MCY 70: 21 metres of length that give the impression of being aboard a mega-yacht. 3 or 4 cabins layout for the lower deck

Main Deck



Azimut 70: conventional layout



Lower Deck

MCY 70:
-possibility to choose between 3 or 4 cabins layouts
-Four bathrooms (one as day toilet) in both versions
-Two separate crew cabins with dedicated AC system

Azimut 70:
-one solution only on the lower deck
-Three bathrooms
-One crew cabin with two berths



Touch the difference...



Exclusive MCY 70 Bow Lounge Layout



Azimut 70: Conventional Layout

Touch the difference...

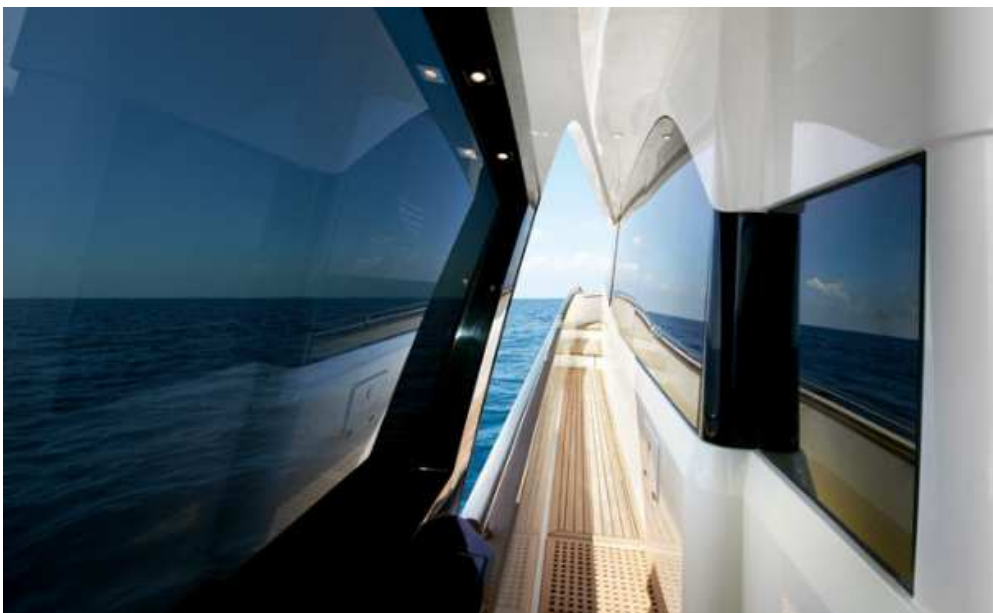


MCY 70: mega yacht mooring area



Azimut 70: conventional sunpad area

Touch the difference...



MCY 70: mega yacht sideways with safe and comfortable portuguese bridge



Azimut 70: conventional sideways, lots of steps, high pulpits



MONTECARLOYACHTS

Touch the difference...



Azimut 70: less space available



MCY 70: large space and rational design



MONTECARLOYACHTS

Touch the difference...



MCY 70: Carbon T-Top with electric opening soft top



Azimut 70: conventional bimini



MONTECARLOYACHTS

Touch the difference...



MCY 70: open lounge and relaxing area, no steps along all the main deck



Azimut 70: space really divided into smaller areas, several steps in the middle of the saloon



MONTECARLOYACHTS

Touch the difference...



MCY 70: 80 x 200cm guest beds

Azimut 70: smaller guest beds





MONTECARLOYACHTS

Touch the difference...



*MCY 70: stone/marble in the bathrooms –
keramic extra luxe tiles*



*Azimut 70: white corian sink and top – fiberglass
serial production details*



MONTECARLOYACHTS

Touch the difference...



MCY 70: comfortable access to all cabins - natural light – top quality materials



Azimut 70: quite narrow access to the lower deck



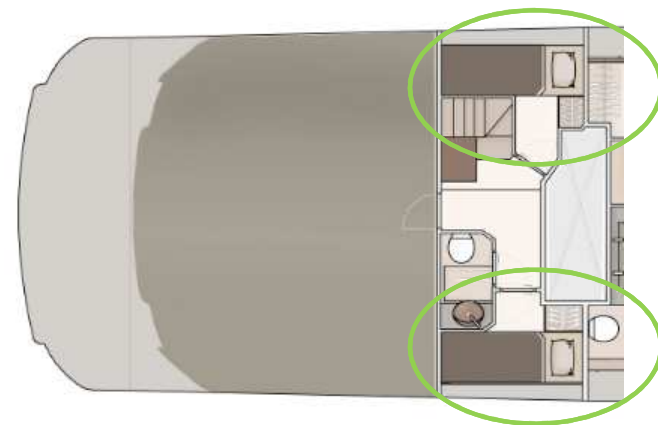
MONTECARLOYACHTS

Touch the difference...

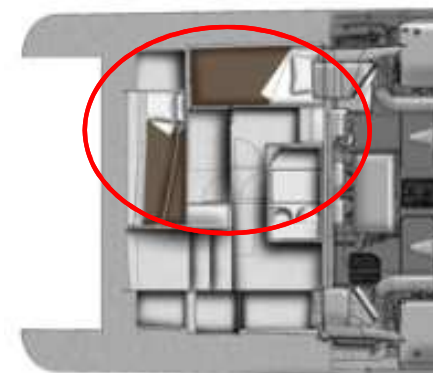


MCY 70:

- two separate crew cabins
- generous living space
- private bathroom



Azimut 70: only one smaller cabin with two berths together





MONTECARLOYACHTS

Touch the difference...

MCY 70: possibility to choose between POD ZF 4000 or V-Drive propulsions



This new propulsion system is suitable for large yachts powered by engines up to 1200 hp and comprises a standard transmission mounted to a steerable pod unit with twin, counter-rotating propellers.

The superior efficiency of the ZF POD, compared to traditional propulsion systems, results in increased cruising speed of up to 15% with the same installed power. This improved performance is accompanied by up to 20% reduction in fuel consumption.

Link to ZF website:

http://www.zf.com/corporate/en/products/product_range/further_product_ranges/boats/poddrives/drives.html



Azimut 70: only direct shaft propulsion available



MONTECARLOYACHTS

Touch the difference...

MCY 70: Boat Control Systems - Interceptor Trim Tab

ATOS - Automatic Trim

Automatic Trim Optimization System

Automatic control of running trim for improved speed and lowest possible fuel consumption.

BTOS - Bi Trim

Bi Trim Optimization System

Automatic correction of your boats Trim & List. To always run your boat with the best attitude.

CTOS - Coordinated Turn

Coordinated Turn Optimization System

Automatic control of heel angle during turns for improved comfort and safety.

Link to Humphree website: <http://www.humphree.com/products/>



Azimut 70: normal hydraulic flaps available

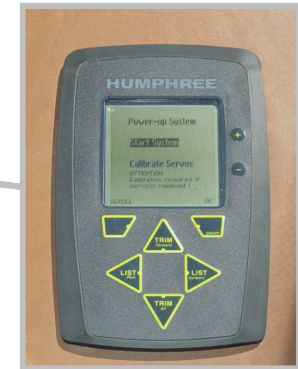
The yacht should reflect owner's personality... so please choose whatever color you prefer for hull painting.



Exclusive Du Pont paint for hull



MCY 70 vs Azimut 70: Electronic Equipment

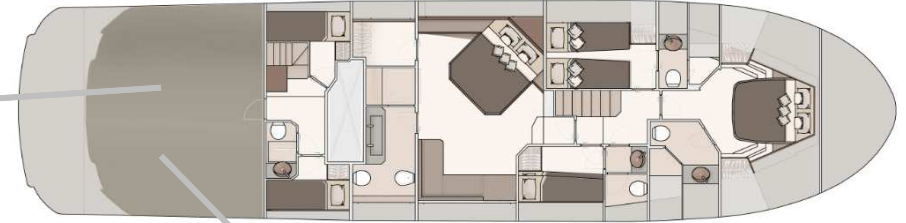


✓ AVAILABLE	EQUIPMENT	MCY 70	MCY 70	AZ70	
	Humphree : Automatic control of running trim for improved speed and lowest possible fuel consumption. Depending on configuration, Humphree Interceptor Systems reduces resistance at hump speed, reduces wavemaking and wash, increases speed and vessel range, controls running trim and list, optimizes automatically trim and speed, pitch and roll motions.	OPT.	✓	✗	(Not available on AZ70 – different solution)
	Manoeuvring Joystick (on main deck and flybridge dashboards): control main propellers and bow thruster without using steering wheel and gear levers .	STD with POD	✓	✗	(AZ70: different joystick system as OPT)
	Electronic Management System EMS: allows you to control all the functions and status of the yacht with a unique touch screen display made by BONING	STD	✓	✗	(Not available on AZ70 – Different System - Analogical solution)



MONTECARLOYACHTS

MCY 70 vs Azimut 70: Engine Room and Crew Cabin Main Equipment



MCY 70: largest Engine Room in class with dedicated aft hatch

STANDARD EQUIPMENT	MCY70	AZ70	
Air Conditioning	✓	✓	(MCY70: std - AZ70: std)
Generator	✓	✓	(MCY70: std - AZ70: std)
Two separate crew cabins (plus private bathroom)	✓	✗	(MCY70: std - AZ70: only one cabin with two berths, smaller than on MCY70)
FM200 Seafire system in the engine room with alarm sensor and automatic shut down	✓	✗	(MCY70: std - AZ70: different solution)
Hydraulic telescopic passerelle	✓	✗	(MCY70: std - AZ70: opt)
Bathing platform with hydraulic up/down lifting system – 600 kg max loading capacity	✓	✗	(MCY70: opt. - AZ70: smaller platform with less loading capacity)

✓ Available (see note for std. or opt.)

MCY 70 vs Azimut 70: Standard Exterior Style and Equipment

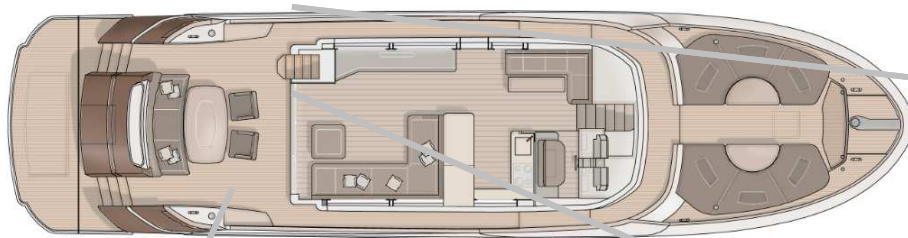


EXTERIOR STYLE: STANDARD EQUIPMENT	MCY 70	AZ70	
Fiberglass radar mast, black painted, with aluminum wings	✔	✘	(Not available)
Carbon Fiber T-Top with electric opening Soft Top (Optional)	✔	✘	(Not available)
Sofas, with integrated removable backrest for double function (sofa or sunbathing cushion), with teak tables electrically movable, large capacity storages and decorative cushions	✔	✘	(Not available - Conventional layout)
Exclusive MCY design large windows with opening portholes	✔	✘	(Not available)
✔ STANDARD (or available as opt. where specified)			



MONTECARLOYACHTS

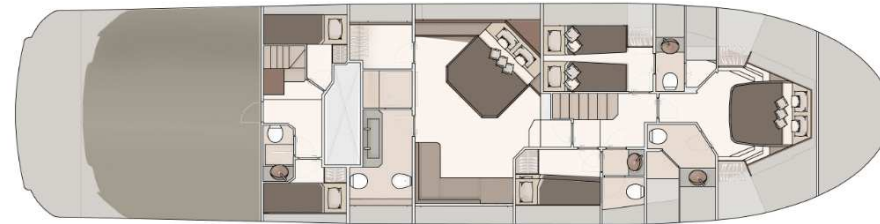
MCY 70 vs Azimut 70: Standard Exterior Style and Equipment



EXTERIOR STYLE: STANDARD EQUIPMENT	MCY 70	AZ70	
Stainless steel and tempered glass fashion plates for lateral protection of the cockpit, with courtesy lights	✓	✗	(Not available)
Dedicated hatch hidden underneath the flybridge stairs to access the crew quarters and engine room	✓	✗	(Not available)
Saloon door in stainless steel and tempered glass with special system for complete folding of the 3 door panels on port side	✓	✗	(Not completely openable on the AZ70)

✓ STANDARD

MCY 70 vs Azimut 70: Interior Style and Equipment



EQUIPMENT	MCY 70	AZ70	
Distressed oak and grey sycamore, marble floors, touches of lacquer, Armani and Rubelli fabrics	✔	✘	(Not available on AZ70 – Different materials)
Electric venetians blinds on both port and starboard sides, covered in microfiber technical fabric	✔	✘	(Different solution on AZ70)
Master shower, VIP shower, and Guest shower with central rain shower on the ceiling	✔	✘	(Different solution on AZ70)
✔ AVAILABLE			



MONTECARLOYACHTS



Monte Carlo Yachts SpA
Via Consiglio d'Europa 90
34074 Monfalcone (GO), Italy
Ph. +39 0481 283111
info@montecarloyachts.it

The curtain rises for the third time: it's the new Monte Carlo Yachts 70, the third step in the right direction. The evolution of all the aesthetic and functional characteristics expressed by the MCY 76 and by the MCY 65. There's no boat like a Monte Carlo Yachts. And there's no yacht like the MCY 70.